



Setting up Oracle BI Scheduler Database

A schedule database is required for Oracle BI Schedule service to work.

Use following steps to configure Oracle BI Scheduler:

- Identify a database
- Create scheduler tables
- Configure Job Manager
- Configure XML files
- Start Oracle BI Schedule Service

Identify a database

The schedule database would hold scheduler tables. You could choose any supported database to be scheduler database. Supported databases are: Oracle, DB2, MSSQL, Teradata, and SQLServer.

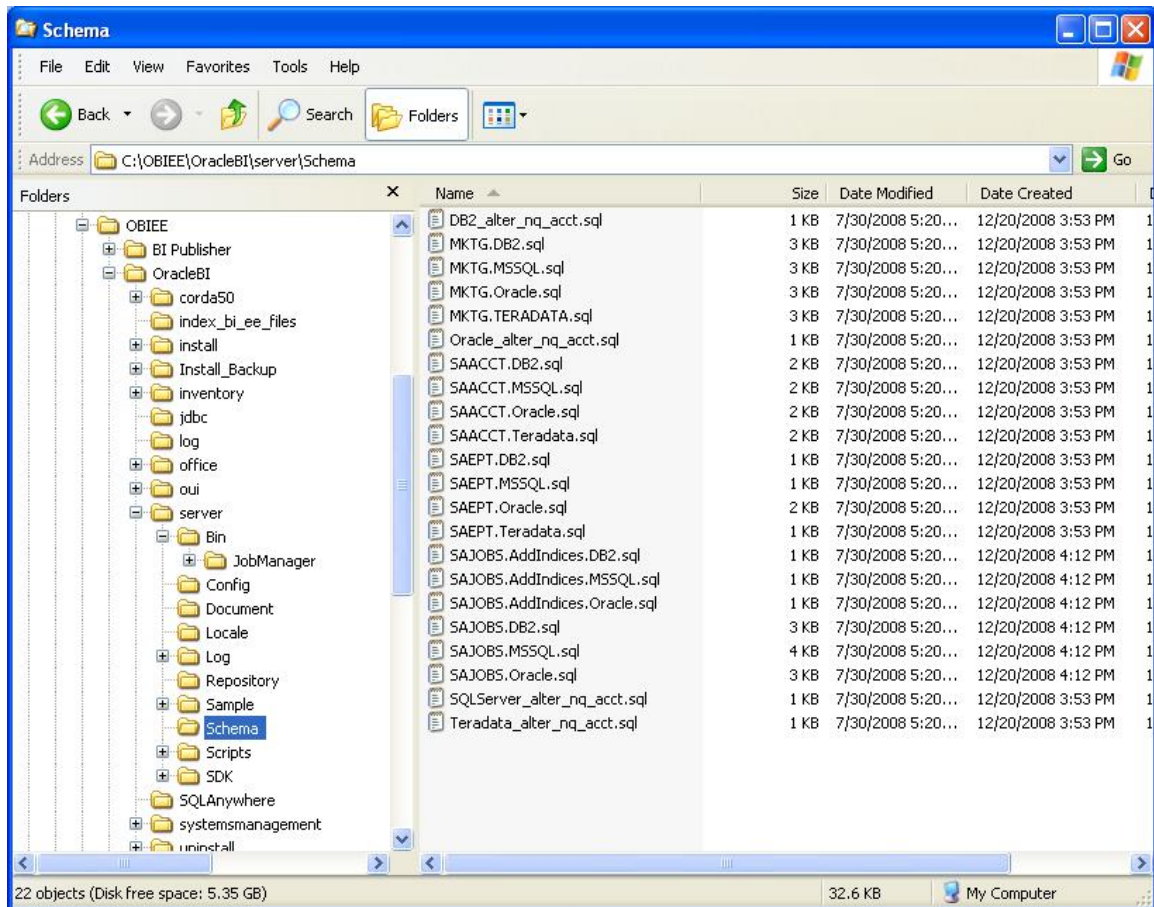
In this document we assume that Oracle database is used for Scheduler database.
Create a new schema to host the scheduler tables. For example, Sched_1@OBIEE

Create scheduler tables

Scripts to create scheduler tables are located under C:\OBIEE\OracleBI\server\Schema folder.



Oracle BI Scheduler Database Setup



For Oracle database, use SAJOBS.Oracle.sql to create the scheduler tables.

Launch Oracle SQL*Plus, login as Sched_1@OBIEE .

Next enter the following string at the SQL > prompt to run the batch sql file:

```
start C:\OBIEE\OracleBI\server\schema\SAJOBS.Oracle.sql;
```


This will create scheduler tables.

Verify that the tables were created by entering the following string at the SQL > prompt:

```
select table_name from user_tables where table_name like 'S_NQ%';
```



Oracle BI Scheduler Database Setup

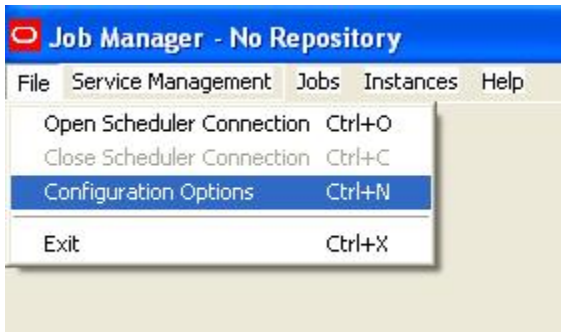


```
Oracle SQL*Plus
File Edit Search Options Help
SQL> select table_name from user_tables where table_name like 'S_NQ%';
TABLE_NAME
-----
S_NQ_JOB_PARAM
S_NQ_INSTANCE
S_NQ_JOB
S_NQ_ERR_MSG
SQL>
```

Configure Job Manager

Launch Job Manager (go to Start > Programs > Oracle Business Intelligence > Job Manager)

From the Job Manager's File menu select Configure Options.



Schedule Configuration screen will be displayed. Select Database type as your schedule database type, enter data source name, user name and password. When completed, the screen will look as below:



Oracle BI Scheduler Database Setup

Scheduler Configuration

Scheduler | Mail | iBots | Workflow | Java Extension

Database | General | Advanced

Connection Pool

Database Type: Oracle 10g R2 | Call Interface: Default (OCI 10g R1)

Data Source Name: OBIEE

Username: Sched_1 | Password: ***** | Confirm Password: *****

Timeout (Minutes): 60 | Maximum Connections: 5

Database Tables

Jobs: S_NQ_JOB

Instances: S_NQ_INSTANCE

Parameters: S_NQ_JOB_PARAM

Messages: S_NQ_ERR_MSG

OK | Cancel | Revert | Defaults

Click Ok

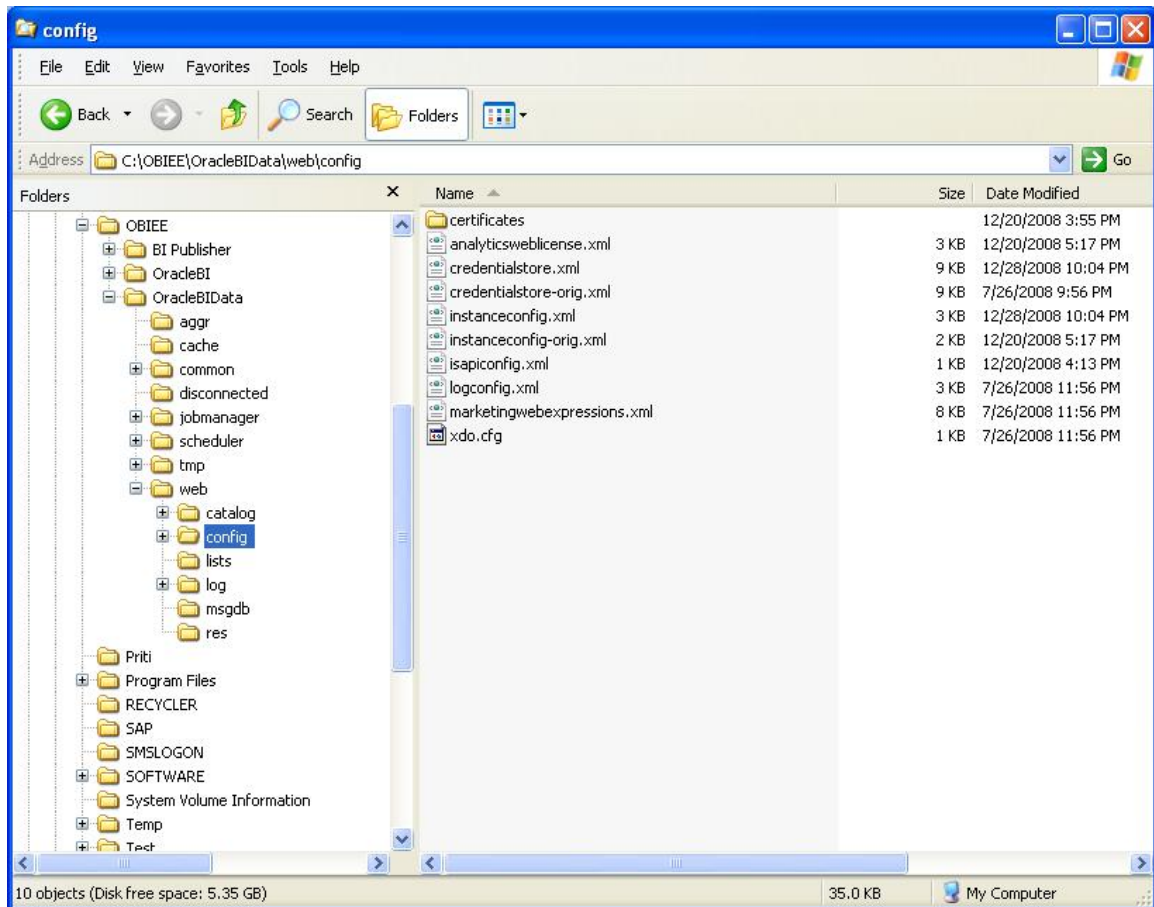
Configure XML Files

You need to run the cryptotools utility that will update credentialstore.xml file. You also need to update instanceconfig.xml file. These xml files are located under OracleBIData\web\config folder.

Take a backup of these two xml files before making changed.



Oracle BI Scheduler Database Setup



Run cryptotools

Cryptotools utility is located under OracleBI\web\bin folder. Launch MS Command Prompt. Go to OracleBI\web\bin folder.

Type following command and hit return

```
cryptotools credstore -add -infile C:\OBIEE\OracleBIData\web\config\credentialstore.xml
```



Oracle BI Scheduler Database Setup

```
C:\WINDOWS\system32\cmd.exe
C:\OBIEE\OracleBI\web\bin>cryptotools credstore -add -infile C:\OBIEE\OracleBIData\
web\config\credentialstore.xml_
```

- Enter Admin as Credential Alias
- Enter Oracle BI' Administrator as User Name
- Enter Administrator's password
- Encrypt the password

```
C:\WINDOWS\system32\cmd.exe
C:\OBIEE\OracleBI\web\bin>cryptotools credstore -add -infile C:\OBIEE\OracleBIData\
web\config\credentialstore.xml
>Credential Alias: Admin
>Credential "Admin" already exists. Do you want to overwrite it? y/n (y): y
>Username: Administrator
>Password: *****
>Do you want to encrypt the password? y/n (y): y
>Passphrase for encryption: ***
>Do you want to write the passphrase to the xml? y/n (n): n
>File "C:\OBIEE\OracleBIData\web\config\credentialstore.xml" exists. Do you want
to overwrite it? y/n (y): y
C:\OBIEE\OracleBI\web\bin>
```



Update instanceconfig.xml file

Instanceconfig.xml file is located under OracleBIData\web\config folder.

Open it in an editor like notepad.

Add following line of code

```
<CredentialStore>  
  <CredentialStorage type="file" path="C:\OBIEE\OracleBIData\web\config\credentialstore.xml" />  
</CredentialStore>
```

Save file.

Start Oracle BI Schedule Service

Launch services (go to Start > Control Panel > Administrative Tools > Services)

Select Oracle BI Schedule Service and click on Start

Service will start.